



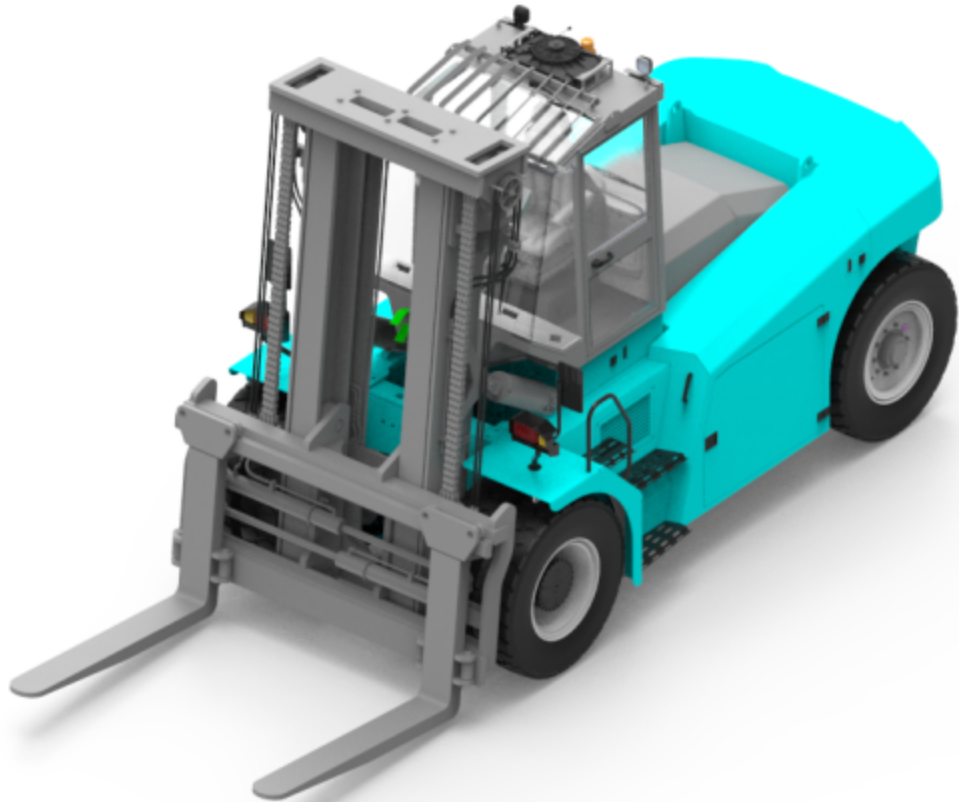
16-25 吨电动平衡重叉车

16-25TON ELECTRIC COUNTER BALANCED FORKLIFT

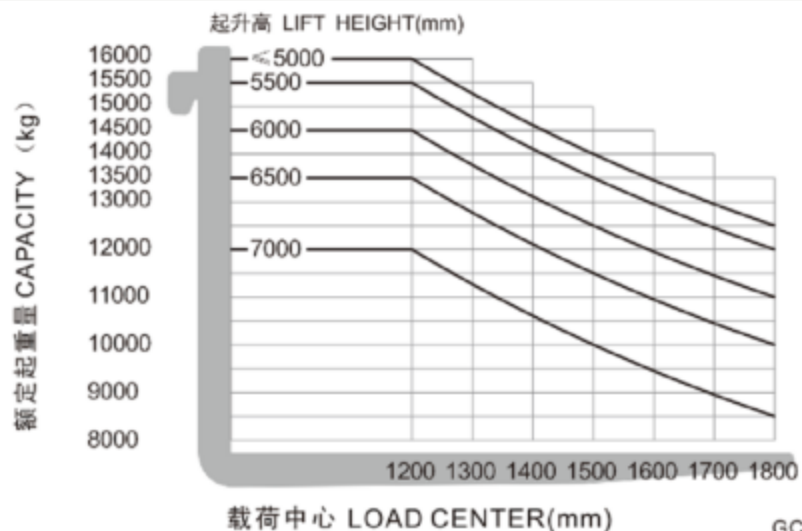
SPECIFICATIONS OF 16TON ELECTRIC COUNTER BALANCED FORKLIFT

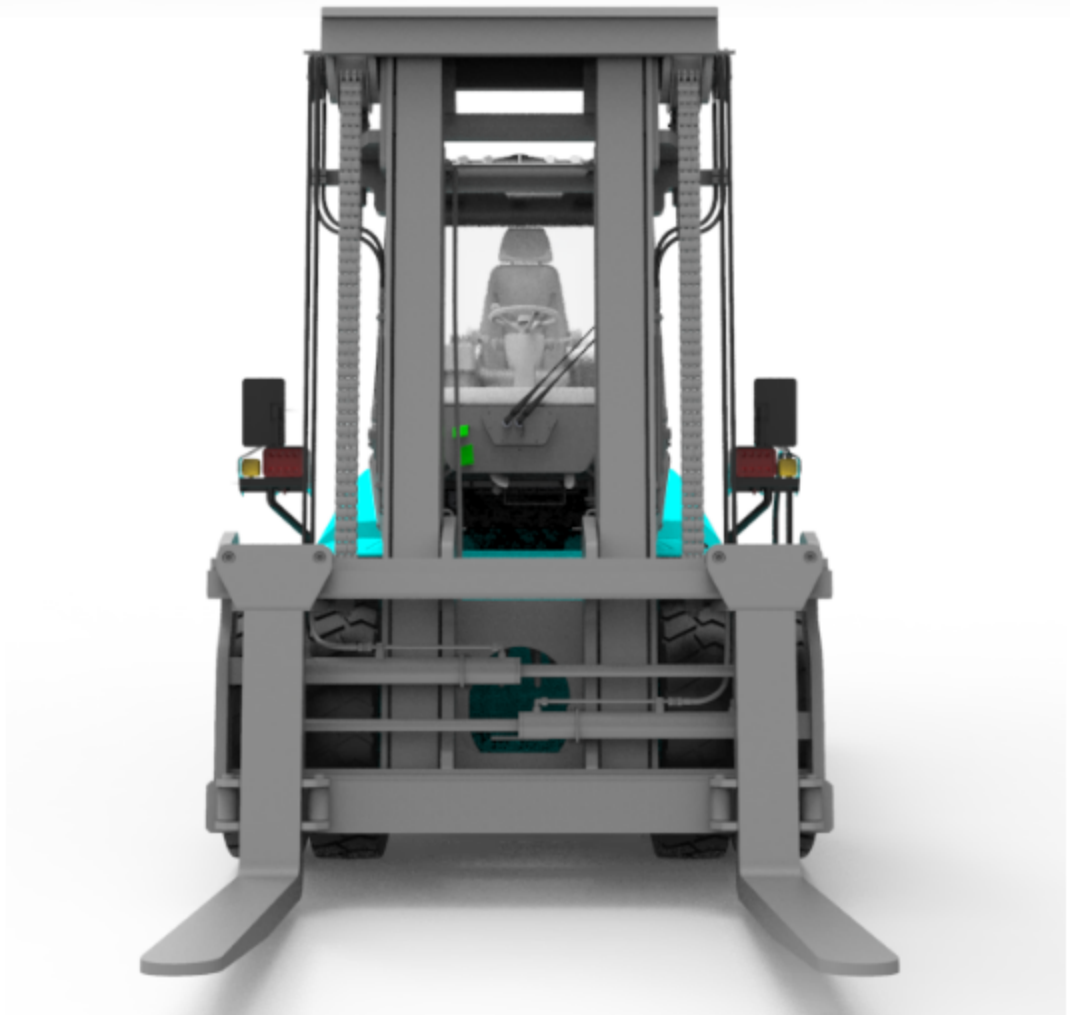
Characteristic				
1	Model			FB160
2	Power Type			Electric
3	Driving Type			Seated
4	Rated Capacity		kg	16000
5	Load Centre		mm	900
Weight				
6	Service Weight		kg	26500
Tyre & Chassis				
7	Tire Type			Air/Solid tires
8	Wheel number X=Drive wheel(front/rear)			4X/2
9	Front Tires			12.00-24-24PR
10	Rear Tires			12.00-20-20PR
11	Front Tread	S	mm	1900
12	Rear Tread	P	mm	2030
13	Wheelbase	L5	mm	3600
Dimension				
14	Lift Height	h3	mm	4000
15	Fork Size	L3×W×T	mm	2420×200×100
16	Mast Tilt Angle(F/R)	α/β	°	6/12
17	Mast Lowered Height	h1	mm	3660
18	Free lift distance	h2	mm	/
19	Mast Extended Height	h4	mm	5655
20	Backrest Height	h7	mm	/
21	Fork adjust distance	R	mm	640-2220
22	Length to face of fork	L2	mm	5450
23	Overall width	B	mm	2610
24	Overall Guard Height	h5	mm	3020
25	Distance from roof to seat	h6	mm	1000
26	Front overhang	X	mm	970
27	Rear hoverhang	L4	mm	930
28	Turning radius(outside)	Wa	mm	5300
29	Ground Clearance(Bottom of mast)	m1	mm	250
30	Min. intersecting aisle	Ra	mm	7500
31	Min. right angle stacking aisle width	RASA	mm	7700
Performance				
32	Max. Travel speed(Full load/No load)		km/h	20/18
33	Lifting speed(Full load/No load)		mm/s	350/290
34	Lowering speed(Full load/No load)		mm/s	≥300 ≤600
35	Max. Gradeability		%	15
36	Max. traction(Full load)		kN	90
Electrical				
37	Battery	Type		Lithium iron phosphate
38		Voltage/Capacity	V/Ah	608/346

39		Rated storage	Kwh	210
40		Charge/discharge cycle number		>4000
41		Power consumption	kwh/h	40
42	Drive Motor	Type		Permanent Magnet Synchronous Motor
43		Rated power	Kw	2×39
44	Lift Motor	Type		Permanent Magnet Synchronous Motor
45		Rated power	Kw	2×49
Others				
46	Operating pressure		Mpa	20



负载曲线图 CAPACITY CHART





SPECIFICATIONS OF 25TON ELECTRIC COUNTER BALANCED FORKLIFT

Characteristic				
1	Model			FB250
2	Power Type			Electric
3	Driving Type			Seated
4	Rated Capacity		kg	25000
5	Load Centre		mm	1200
Weight				
6	Service Weight		kg	37870
Tyre & Chassis				
7	Tire Type			Air tires
8	Wheel number X=Drive wheel(front/rear)			4X/2
9	Front Tires			14.00×24-PR24
10	Rear Tires			14.00×24-PR24
11	Front Tread	S	mm	2200
12	Rear Tread	P	mm	2345
13	Wheelbase	L5	mm	4100
Dimension				
14	Lift Height	h3	mm	4000
15	Fork Size	L3×W×T	mm	2420x250x120
16	Mast Tilt Angle(F/R)	α/β	°	5/10
17	Mast Lowered Height	h1	mm	4000
18	Free lift distance	h2	mm	/
19	Mast Extended Height	h4	mm	6005
20	Backrest Height	h7	mm	/
21	Fork adjust distance	R	mm	810-2670
22	Length to face of fork	L2	mm	6265
23	Overall width	B	mm	3050
24	Overall Guard Height	h5	mm	3500
25	Distance from roof to seat	h6	mm	1050
26	Front overhang	X	mm	1055
27	Rear overhang	L4	mm	1105
28	Turning radius(outside)	Wa	mm	5900
29	Ground Clearance(Bottom of mast)	m1	mm	360
30	Min. intersecting aisle	Ra	mm	6200
31	Min. right angle stacking aisle width	RASA	mm	10500
Performance				
32	Max. Travel speed(Full load/No load)		km/h	20/17
33	Lifting speed(Full load/No load)		mm/s	320/300
34	Lowering speed(Full load/No load)		mm/s	340/470
35	Max. Gradeability(Full load)		%	20/15
36	Max. traction(Full load)		kN	130

Electrical			
37	Battery	Type	Lithium iron phosphate
38		Voltage/Capacity	V/Ah 618.24/456
39		Rated storage	Kwh 282
40		Charge/discharge cycle number	>4000
41		Power consumption	kwh/h 50
42	Drive Motor	Type	Permanent Magnet Synchronous Motor
43		Rated power	Kw 90
44	Lift Motor	Type	Permanent Magnet Synchronous Motor
45		Rated power	Kw 2*60
Others			
46	Operating pressure	Mpa	20

